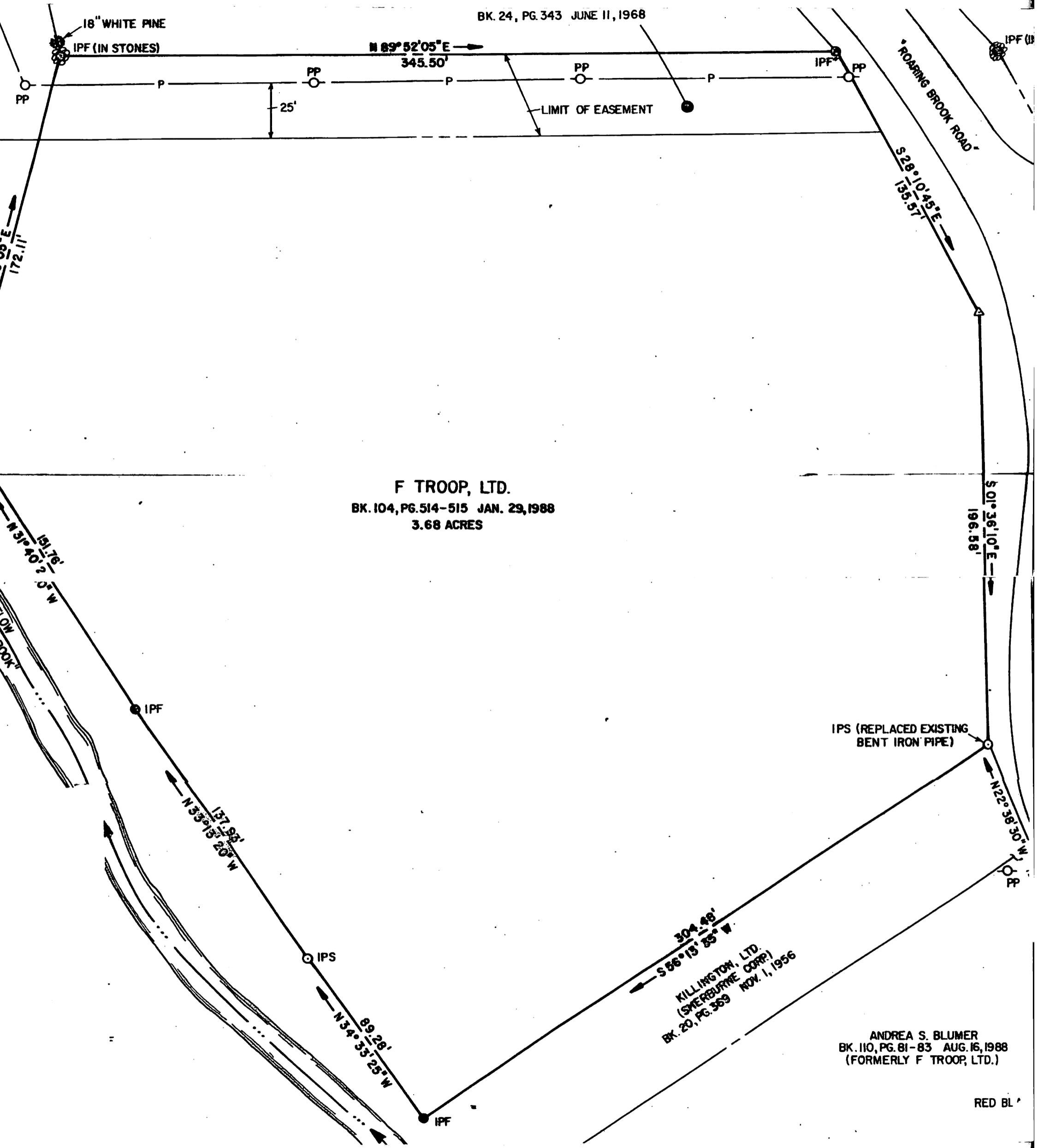


CENTRAL VERMONT PUBLIC
 SERVICE CORP. EASEMENT
 BK. 24, PG. 343 JUNE 11, 1968
 BK. 24, PG. 343 JUNE 11, 1968



F TROOP, LTD.
 BK. 104, PG. 514-515 JAN. 29, 1988
 3.68 ACRES

KILLINGTON, LTD.
 (SHELBURNE CORP)
 BK. 20, PG. 369 NOV. 1, 1956

ANDREA S. BLUMER
 BK. 110, PG. 81-83 AUG. 16, 1988
 (FORMERLY F TROOP, LTD.)

RED BL